

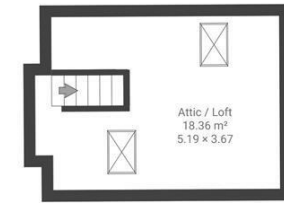
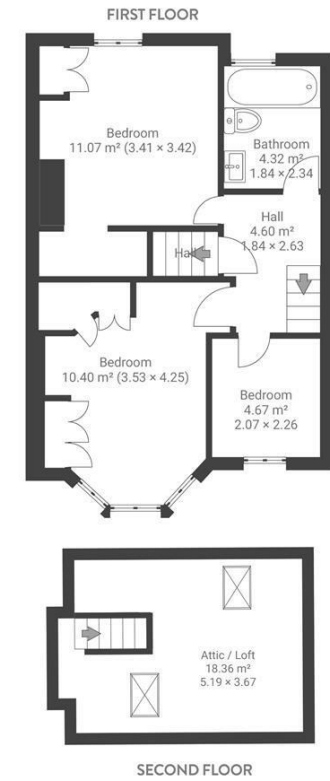
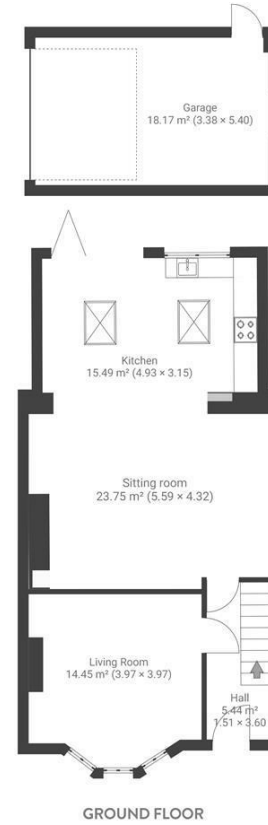
Boardwalk

# Bloomfield Road

, BRISTOL

## Bloomfield Road BRISLINGTON

APPROXIMATE FLOOR AREA  
122 SQM / 1313 SQFT



Boardwalk

# Bloomfield Road , BRISTOL

£

£490,000



BS4 3QP

zzz

3 Bedrooms



1 Bathrooms

*"Some of our favourite moments have been hosting friends in the open-plan kitchen-diner, sliding open the bifold doors onto the garden for summer BBQs, and enjoying the evening sun as hot air balloons drift overhead. The house has a lovely balance between bright, sociable spaces and a cosy front room for quieter evenings. With the added convenience of rear access and a garage, it's a comfortable home that feels welcoming and has been wonderful to live in for the past eight years."*

